

Goat Anti-MAP3K6 Antibody
Peptide-affinity purified goat antibody
Catalog # AF2192a**Specification**

Goat Anti-MAP3K6 Antibody - Product Information

Application	WB, E
Primary Accession	O95382
Other Accession	NP_004663 , 9064 , 313022 (mouse) , 53608 (rat)
Reactivity	Rat
Predicted	Human, Mouse, Dog
Host	Goat
Clonality	Polyclonal
Concentration	100ug/200ul
Isotype	IgG
Calculated MW	142596

Goat Anti-MAP3K6 Antibody - Additional Information**Gene ID** 9064**Other Names**

Mitogen-activated protein kinase kinase 6, 2.7.11.25, Apoptosis signal-regulating kinase 2, MAP3K6, ASK2, MAPKKK6, MEKK6

Dilution

WB~~1:1000

E~~N/A

Format

0.5 mg IgG/ml in Tris saline (20mM Tris pH7.3, 150mM NaCl), 0.02% sodium azide, with 0.5% bovine serum albumin

Storage

Maintain refrigerated at 2-8°C for up to 6 months. For long term storage store at -20°C in small aliquots to prevent freeze-thaw cycles.

Precautions

Goat Anti-MAP3K6 Antibody is for research use only and not for use in diagnostic or therapeutic procedures.

Goat Anti-MAP3K6 Antibody - Protein Information**Name** MAP3K6**Synonyms** ASK2, MAPKKK6, MEKK6

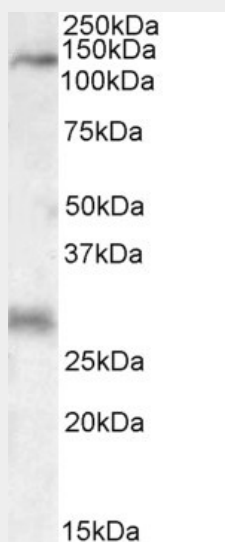
Function

Component of a protein kinase signal transduction cascade. Activates the JNK, but not ERK or p38 kinase pathways.

Goat Anti-MAP3K6 Antibody - Protocols

Provided below are standard protocols that you may find useful for product applications.

- [Western Blot](#)
- [Blocking Peptides](#)
- [Dot Blot](#)
- [Immunohistochemistry](#)
- [Immunofluorescence](#)
- [Immunoprecipitation](#)
- [Flow Cytometry](#)
- [Cell Culture](#)

Goat Anti-MAP3K6 Antibody - Images

AF2192a (0.3 µg/ml) staining of Rat Heart lysate (35 µg protein in RIPA buffer). Primary incubation was 1 hour. Detected by chemiluminescence.

Goat Anti-MAP3K6 Antibody - Background

This gene encodes a member of the serine/threonine protein kinase family. The encoded kinase was identified by its interaction with MAP3K5/ASK, a protein kinase and an activator of c-Jun kinase (MAPK7/JNK) and MAPK14/p38 kinase. This kinase was found to weakly activate MAPK7, but not MAPK1/ERK or MAPK14. An alternatively spliced transcript variant has been found for this gene, but its biological validity has not been determined.

Goat Anti-MAP3K6 Antibody - References

Variation at the NFATC2 Locus Increases the Risk of Thiazolinedione-Induced Edema in the Diabetes REduction Assessment with ramipril and rosiglitazone Medication (DREAM) Study. Bailey SD, et al. Diabetes Care, 2010 Jul 13. PMID 20628086.

Gene-centric association signals for lipids and apolipoproteins identified via the HumanCVD BeadChip. Talmud PJ, et al. Am J Hum Genet, 2009 Nov. PMID 19913121.

Mitogen-activated protein 3 kinase 6 mediates angiogenic and tumorigenic effects via vascular endothelial growth factor expression. Eto N, et al. Am J Pathol, 2009 Apr. PMID 19246638.

ASK1 and MAP2K6 as modifiers of age at onset in Huntington's disease. Arning L, et al. J Mol Med, 2008 Apr. PMID 18327563.

Apoptosis signal-regulating kinase (ASK) 2 functions as a mitogen-activated protein kinase kinase kinase in a heteromeric complex with ASK1. Takeda K, et al. J Biol Chem, 2007 Mar 9. PMID 17210579.